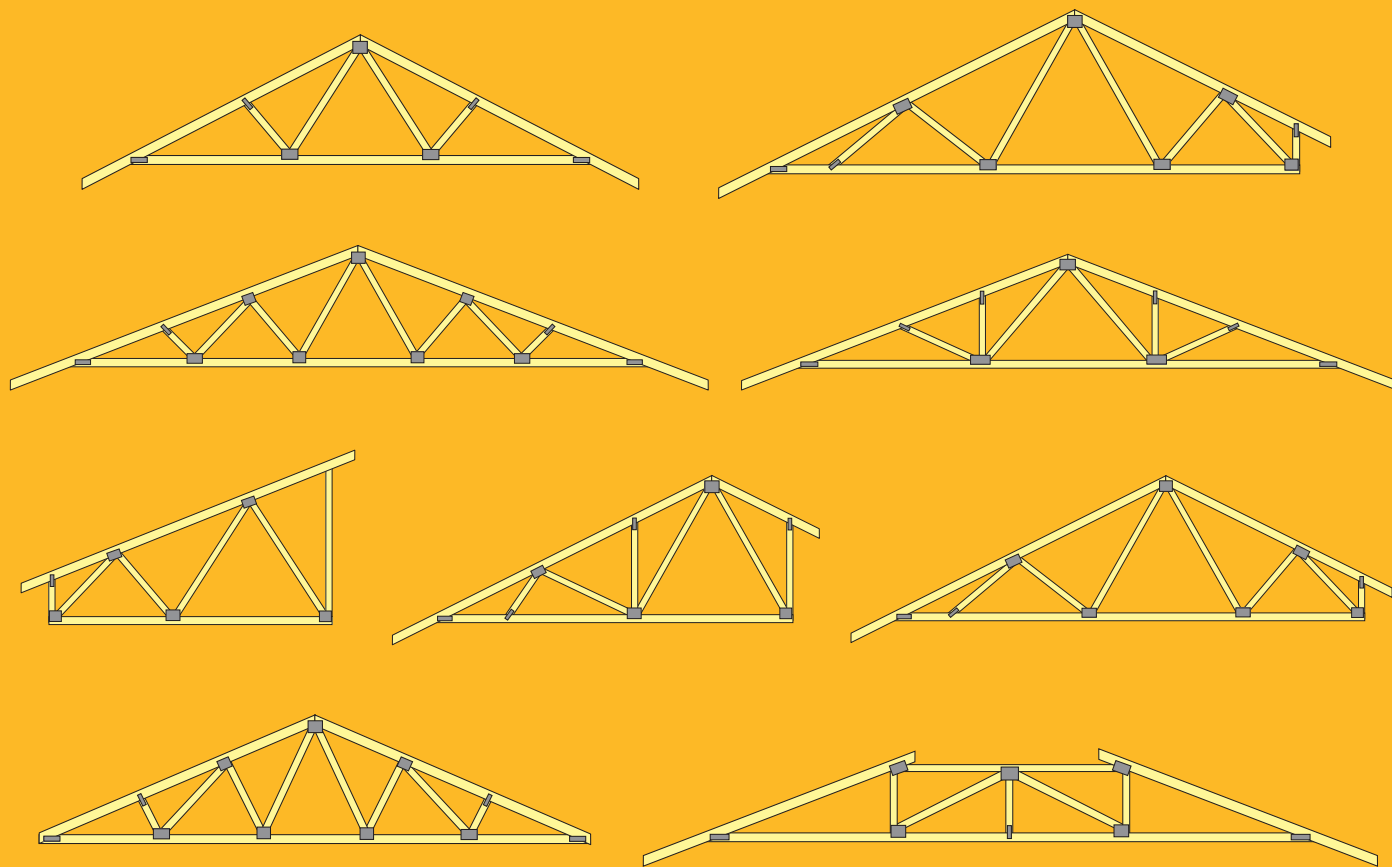


HydraPRESS FEATURES

- Truss assembly up to 14 metres
- 13 independent, 26 tonne press heads
- Integrated touch screen PC based operations
- Heavy duty drag chains house all wiring and pneumatic lines
- Easy-load Gang-Nail magazines
- Invisible safety curtain
- Movable operator consol with interlocked controls, air & hydraulic lines contained within cat track
- Pneumatic timber clamps
- Walk through design

TYPICAL TRUSS TYPES



There is a broad range of truss configurations and sizes that can be assembled by the HydraPRESS. Above are some typical examples.

PRESSING HOME THE ADVANTAGE



For more information about the HydraPRESS or any other any other MiTek products or systems, call your local state office

- | | |
|--------------------|--------------------------|
| VIC (03) 8795 8888 | WA (08) 9411 2845 |
| NSW (02) 9609 8700 | NZ (09) 274 7109 |
| QLD (07) 3268 1666 | MALAYSIA (603) 3176 7473 |
| SA (08) 8234 1326 | |



creating the **advantage**



creating the **advantage**

or visit: www.mitek.com.au

AUTOMATED JIG SETTING DELIVERS IMPRESSIVE RESULTS



The most time-consuming operation in a modern truss plant is jig setting. Truss plant studies have shown that: in the time it takes to set jigs, most truss plants can produce up to 4 standard trusses. Considering the average truss plant is required to change jig setting every 3 to 4 trusses, almost half the truss assembly time per day can be taken up in changing jig settings.

With this in mind, MiTek has developed an automated, multi-head press called the HydraPRESS*.

The HydraPRESS combines rapid automated jig setting and connector plate placement with very fast pressing cycles (a well-known feature of multi-head presses).

The set up time for the HydraPRESS is typically less than 30 seconds, making it equally as efficient on small or large truss production runs.

The HydraPRESS is the most productive pressing system available today. Compared with other multi-head presses, roller pressing systems, or table presses the HydraPRESS produces more trusses, using less



labour and less floor space. Plus, as jig setting is fully automated, HydraPRESS operators require less skill, reducing the training and recruitment costs to fabricators.

The HydraPRESS is designed in Australia but is equally at home in truss plants all over the world because it has been developed specifically to work with MiTek's universally accepted 20/20 program. Like all MiTek machinery, safety is at a premium, with a host of unique in-built safety options including an all-of-machine light curtain. If something (or someone) enters the HydraPRESS work area during the pressing cycle the HydraPRESS will immediately stop the pressing operation. Another key feature of the HydraPRESS is its maintenance-friendly, easy access design. And should the need arise, service and spare parts can be obtained worldwide, ensuring minimal downtime.

All of these features result in real gains in efficiency by increasing output, reducing labour and rental costs and reducing indirect costs of training and recruitment. The versatility and automatic capabilities of the HydraPRESS make it a powerful tool for any plant. For many it will represent a new era in automation for their operations.

The HydraPRESS is the most advanced, fully automated truss assembly machine in the world!

HydraPRESS* ADVANTAGES:

- Multiple Press Heads
- Very quick pressing times
- Extremely fast set-up times
- Suitable for short production runs
- Automatic Nail Plate feeders
- Retractable press heads
- Computerised positioning of press heads, timber stops, camber adjustments and plate locations
- Invisible Safety Curtain