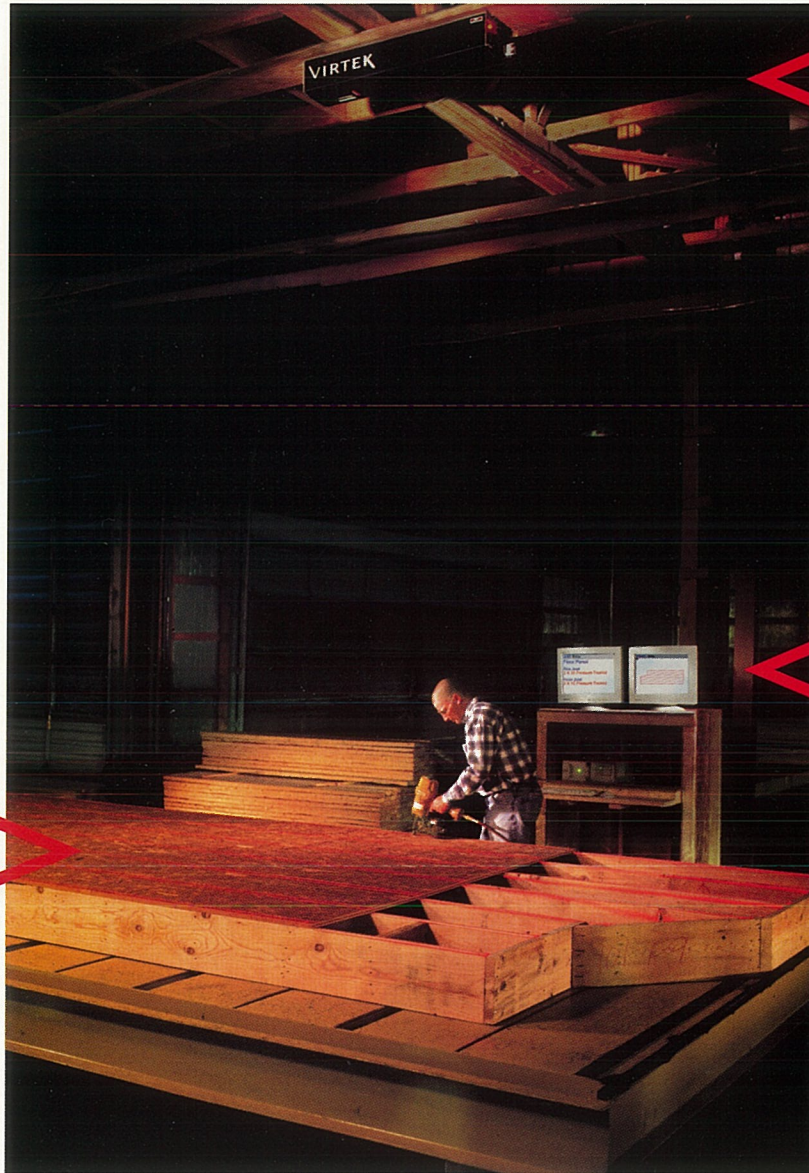


PanelLine™

MAKES PANEL CONSTRUCTION AS EASY AS 1-2-3



Project templates up to 14' x 14'. Unlimited panel size can be achieved using multiple laser projectors.

JOB: Kirby	PANEL: kirby
Floor Panel	
Rim Joist	
2 X 10 Pressure Treated	
Floor Joist	
2 X 10 Pressure Treated	

Easy to use PanelLine software provides detailed instructions so workers don't need to refer to blueprints and measure for accuracy.

PanelLine projects the location of studs, headers, sheathing, nailing pattern, sub-components, openings, and inserts with accuracy of $\pm 1/16$ ". Workers see how panels are to be assembled before they begin.

VIRTEK
LEADING THE WORLD IN
PRECISION LASER APPLICATIONS

EASY TO USE

Virtek's PanelLine™ makes panel manufacturing as easy as 1-2-3. There's no need to refer to blueprints or use a measuring tape, so even the most complicated wall or floor panel can be built in minutes. The system projects a laser template of the panel members onto the work surface, showing workers how to assemble panels and sub-components.

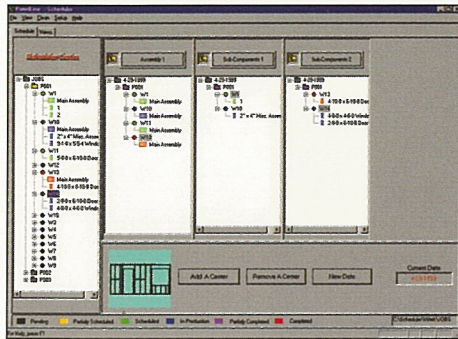
HIGHER THROUGHPUT

PanelLine eliminates the need to pre-mark top and bottom plates. The system identifies placement location for studs, headers, sheathing, nailing pattern, sub-components, openings, and inserts with $\pm 1/16$ " accuracy. The result is higher throughput and improved construction quality – employing less skilled labor on the same table you use today.

The PanelLine software streamlines panel manufacturing by guiding workers through assembly. PanelLine interfaces with leading panel design software programs and AutoCAD®. Engineering changes between design and manufacturing can be quickly communicated.

GO PAPERLESS WITH PANELLINE™

PanelLine Integrated Manufacturing (P.I.M.) allows you to assemble panels in a paperless environment. It consists of Virtek's Scheduler software, which interfaces with PanelLine software. Using this management tool, you can schedule and monitor work at each workstation, and at your saws via a network. On-line scheduling information, assembly instructions and material requirements appear on your computer monitor.



With Scheduler you can:

- Schedule the assembly of both panels and sub-components for the entire plant from your desk
- Operate in a Windows drag & drop environment for ease of use
- Schedule and track all cutting
- Monitor the status of each panel and sub-component in real-time
- Plan production in advance and make changes instantly
- See all jobs in production or completed with the click of a mouse
- View a picture of every scheduled item, insuring proper selection

< The Scheduler management tool creates a paperless production process and lets you easily monitor the progress of each scheduled work order in real time.

SAVE TIME AND MONEY

The PanelLine system and Scheduler software option not only reduces your production time, but also saves you money.

The system enables you to:

- Reduce training and supervision costs
- Identify incorrectly cut or picked lumber instantly
- Minimize operator errors that result in rework
- Recall previous designs to rebuild damaged panels
- Maximize your computerized panel drafting investment
- Reduce paper usage through integrated electronic scheduling

FLEXIBLE HARDWARE AND SOFTWARE SOLUTIONS

With the PanelLine Integrated Manufacturing (P.I.M.) system you can create the environment that provides the best solution for your business. You can choose to purchase Scheduler software for the plant, PanelLine software for each workstation (assembly and sub-component) and mount laser projectors only where you need them. Additional work stations and laser projectors may be added at any time.

SYSTEM SPECIFICATIONS

- Position Accuracy +1/16" (0.062") over 14'x14' area at 14' height above work surface
- Laser Line Width 0.035" to 0.045" at 14'
- Laser Device & Output Laser diode device with Maximum 5mW output
- Laser Class Class 111A, meeting the 21CFR 1040 standard for CDRH certification in North America
Class 3B, meeting the 60825-1:1993+A1:1997 for CE certification in Europe
- Projection Systems Fixed-position systems – maximum 8 lasers per system
- Computer System PC with CD ROM, 17" SVGA monitor, keyboard and mouse
- Remote Control Standard
- Operating System Windows NT
- Power Requirements 120V 60Hz or 230V 50Hz
- Agency Approvals UL/CSA and CE
- Customer Support One-year, all-inclusive warranty on hardware and software
Extended hardware and software support options available



MiTek Australia Ltd. A.C.N. 004 564 587

Victoria
4 Forbes Close,
Knoxfield 3180
Tel: (03) 9730 5555
Fax: (03) 9763 4411

New South Wales
Block B, Unit 12, Holker St.
Silverwater 2128
Tel: (02) 9748 1973
Fax: (02) 9748 0269

Queensland
17 Eagleview Place,
Eagle Farm 4009
Tel: (07) 3268 1666
Fax: (07) 3268 2066

South Australia
5/348 Richmond Rd.,
Netley 5037
Tel: (08) 8234 1326
Fax: (08) 8352 4206

Western Australia
9 Crocker Drive,
Malaga 6090
Tel: (08) 9248 8492
Fax: (08) 9248 8563

VISIT OUR WEB SITE: www.mitek.com.au